



Just look for the yellow

Wellness center is a colorful Kilkich presence (for now)

Clad in yellow sheets of gypsum and fiberglass, the Coquille Wellness Center is suddenly an unmistakable landmark at Kilkich. Standing outside the chain-link construction fence, a visitor has a vivid view of the building's 22,000-square-foot expanse.

Where things stand

- Don't worry — that yellow Densglass sheeting is a temporary eyeful. Siding will cover it soon.
- Roofers are nearly finished with Zone 1 (future home of the medical and pharmacy departments) and are starting Zone 2 (dental).

Zone 2's roof should be finished next week.

- The "MEP" — mechanical, electrical and plumbing work — in Zone 1 will finish next week.

What's coming next

- Windows are about three weeks away.
- One or two concrete trucks will visit next week to pour roof pads for heating and cooling units. Expect more of these small pours occasionally in the next few weeks.
- A company called Pacific 3D Reality Capture will arrive Monday

to make three-dimensional images of the project's exposed plumbing, electrical conduit and air ducts. Documenting the inner workings before finishing the walls will help any future remodeling.

- Good news for residents: The vibratory roller, which shakes the neighborhood while compacting crushed rock, won't be back in the near future.
- On the other hand: A stretch of dry weather is likely to pose challenges for dust control. The contractor plans to stay on top of the issue. Cross your fingers!



A view of the interior from atop a scissor lift.



Newly applied plywood subroofing covers Family Health.



Pipes and ducting wait their turn for installation. (Photo by Lon Matheny)

Step by step

Each day brings project a little closer to finish

What's happening

- A concrete crew is onsite this week, pouring rooftop pads for heating and air conditioning units.
- Another subcontractor is starting to hang drywall inside the future medical clinic and pharmacy.

- Roofers are working above the future dental clinic.
- The medical and pharmacy sections are having their rough electrical inspection, and the electricians are moving to the dental area.
- The roof is starting to get framed for the Administration and Family Services section.

What's next

- Drywall work will continue in the medical and pharmacy areas.
- Roof framing will finish above Administration and Family Services, and roofers will start work there.
- More inspections are scheduled in the medical and pharmacy areas.



Workers have installed the circular steel framing for the wellness center's main entrance. Though the doors will be standard rectangles, they'll be framed by a circle that evokes the traditional shape of a plankhouse doorway.

Photo by
Lon Matheny

Getting some closure

Contractors have been racing to enclose the Ko-Kwel Wellness Center before the rainy season, and they're just about there.

- Construction Zone 1, containing the future medical clinic and pharmacy, is walled in and roofed.
- Zone 2, the future dental clinic, is likewise buttoned up.
- Zone 3, future home of Administration and Family Support Services, is not far behind.

Meanwhile, next door ...

The project's roofers are from a local subcontractor, Rich Rayburn Roofing of Coos Bay. Rayburn is handling a separate project at the same time, reroofing the existing Community Health Center building.

The tribe was able to repurpose some unused grant money to pay for the job. The old building's new roof will match its new neighbor, the wellness center.

What's coming

Concrete — Rooftop pads will be poured next week for the heating, ventilation and air conditioning (HVAC) units. Keep your eyes open for concrete trucks entering and leaving the site.

Glass — Windows will arrive on Thursday, Oct. 15. Installation will start Monday, Oct. 19.

14,000 and counting

Wellness center contractors have put in more than 14,000 man-hours with ZERO lost-time accidents. Here's hoping that trend continues.

Flying toward the finish

Builders have finished “flying” the Ko-Kwel Wellness Center’s roof joists into place — an expression that means lifting the roof braces into position with a crane.

They’ve been flying another way, too. They’re slightly ahead of schedule to complete the project next summer.

Other news

- Window installation has begun.
- The Family Health area is getting its roof. That’s the last step to shut out the weather before the rains come.
- Concrete will be poured Thursday for the rooftop heating, ventilation and air conditioning (HVAC) units.

Next week

- Workers will start soundproofing walls in the medical clinic.
- They’ll also begin insulating the HVAC system.

Photos

Top: Posts and beams create the skeleton of the wellness center’s “porte cochere.” That’s a 17th-century French term that means, literally, “coach gateway.” In the 21st century, it’s a fancy way of saying, “drivethru.”

It will be a cozy spot to come and go, safe from the elements. Drivers will be able to pull up outside the main entrance and drop off patients under a rainproof roof.

Middle: Here’s the next stage in the porte cochere’s construction, with roof joists in place.

Bottom: Window installation has begun.

**Photos by
Lon Matheny**



Chase scene

Crews trail one another through project site

Subcontractors at the Ko-Kwel Wellness Center are playing a vigorous game of follow-the-leader these days.

No sooner have the framers finished with an area than the insulators crowd in behind them. The drywall guys (known as “rockers”) will be close behind.

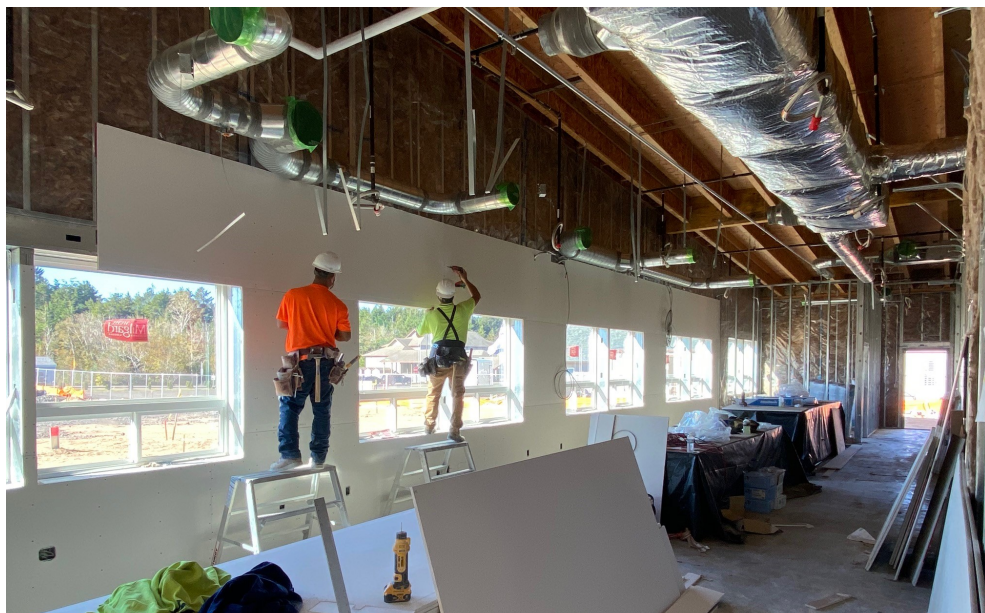
It's one busy place.

What's going on

- Most of the windows have been installed.
- Work is starting on exterior siding.
- The emphasis is on Zone 1 (medical and pharmacy), because the tribe is eager for the pharmacy to open and start producing revenue.
- Outside, workers are preparing to pour curbs and gutters in parking areas.

Next week

More of the same!



Photos

Above: Drywall installers are rockin' in the KWC.

Upper left: A small room near the pharmacy entrance has insulated walls for private conversations with patients.

Lower left: Here's the same area, seen from the opposite side. The window at left is where patients will walk up for service.

Below: Family services staff members stop by to survey their future workspace. Socially distanced, from left: Lori Austin, Lisa Mielke, Roni Jackson and Lauren Morris.

Photos by
Lon Matheny