



KILKICH AREA PLAN STEERING COMMITTEE PROJECT KICK OFF

Location :

Ko-Kwel Casino Resort
Willow Room

Date:

January 26, 2026

Time:

4 p.m. - 7 p.m.



Agenda

Times | Activities

- 4:00 pm | **Welcome & Introductions**
- 4:30 pm | **Envisioning Success**
- 5:00 pm | **Dinner/ Passive Activity**
- 5:30 pm | **Break**
- 5:45 pm | **Project Overview**
- 6:15 pm | **Review Zoning Maps**
- 6:45 pm | **Wrap Up and Next Steps**
- 7:00 pm | **End**

Roles

Contractors/ODOT: Project SMEs, listeners, notetakers, observers

Steering Cmte: Tribal Entity SMEs, participants, listeners, leaders

CIT PM Team: Facilitators, organizers

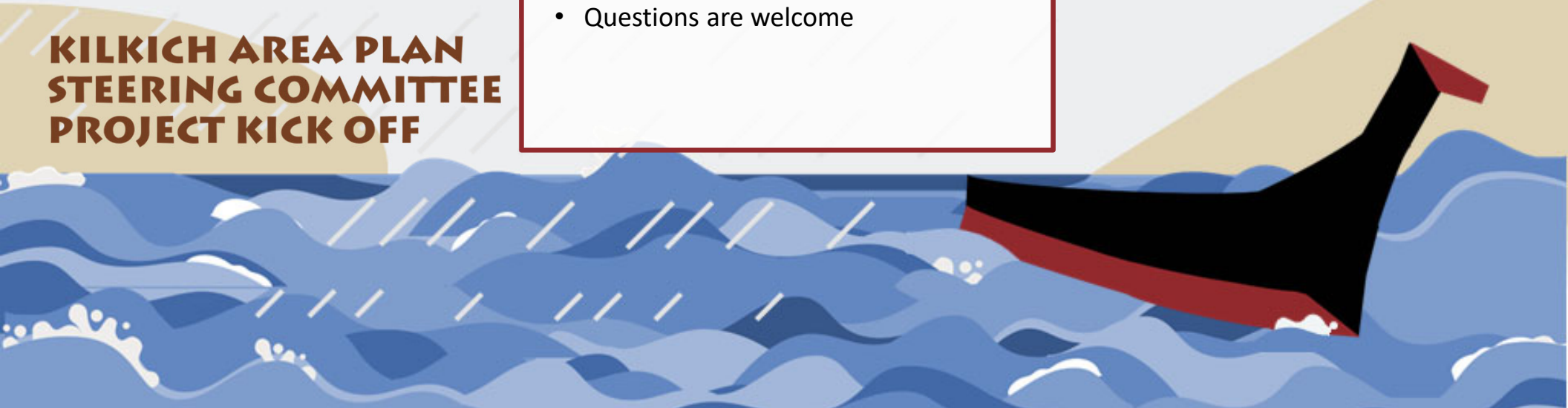
Outcomes

- Come to a common understanding about project scope and timeline
- Find a shared vision and definition of project success
- Come to a shared understanding of everyone's roles & responsibilities

Rules

- Everyone Participates/
- No One Dominates
- Build on Each Others Ideas
- Humor Helps
- Yes, and (instead of No)
- Feel free to move around
- Questions are welcome

**KILKICH AREA PLAN
STEERING COMMITTEE
PROJECT KICK OFF**





INTRODUCTIONS

Please share:

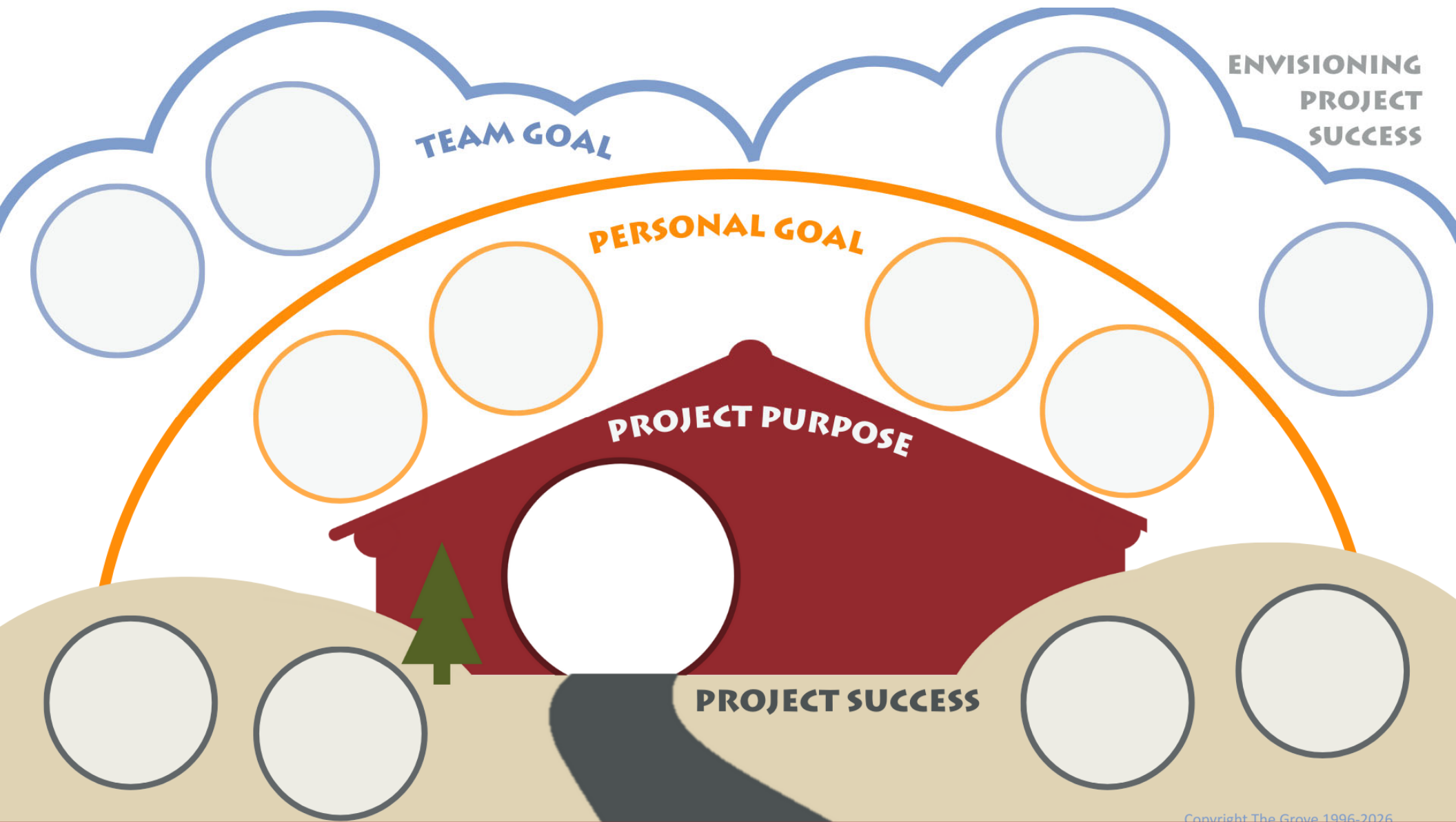
- Your name
- Your title/ role
- Your organization or team
- One thing you hope to accomplish in today's meeting

WARM UP ACTIVITY



Please visit [Slido.com](https://www.slido.com)

Meeting Code:
2354428



Copyright The Grove 1996-2026

Instructions:

- S.C. will be split into 2-3 groups
- You will each fill out a single circle in the Personal Goal, Team Goal, and Project Success sections
- Your small team will work together once you've filled in everyone's circles to decide on the project purpose
- Then we will discuss as a group!

Key: **Your goal** = your personal goal for the project, **Team goal** = your organization's goal for the project, **Project success** = what metric or indicator would show this project has been successful?, **Project purpose** = "The Why?" for the project

PASSIVE DINNER ACTIVITY

Getting to know your working style.

Get it done. Figure out the details later.

Prefer clear structures and process. (Do it right the first time).

Your approach to getting work done.

Need to know only when my action is required.

Prefer more information and project updates.

Information sharing.

Can it be an email?

I'd rather discuss on a call or in person.

Collaboration and communication.

Give me the facts. Concise, to the point, action desired.

I'd like context, background and details.

Context setting.

Zero unread emails. 'Gotta read 'em all.'

586 unread emails.

On an average day, my inbox has...

In the morning.

In the afternoon.

I prefer to meet for Area Plan meetings...



Kilkich Area Plan

Steering Committee Meeting
Monday, January 26

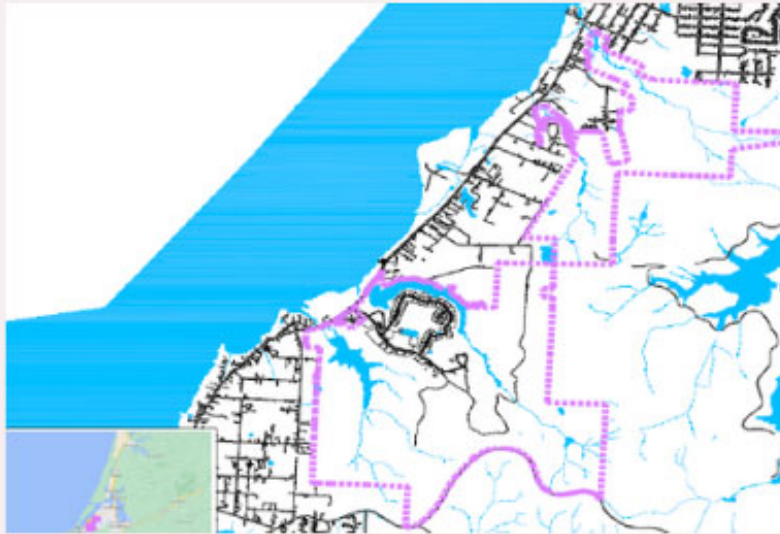


COQUILLE INDIAN TRIBE

Office of Strategic Operations | projects@coquilletribe.org

KILKICH AREA PLAN PROJECT 2026

Contact Kate Strathdee for questions:
katestrathdee@coquilletribe.org



PROJECT DETAILS

The Kilkich Area Plan is part of the Ko-Kwel Nation 2039 vision, a long-term Tribal-led effort to shape our community's future. The phases will focus on housing and program services that align with land use and transportation choices supporting the KKN 2039 vision.

For years, we have advanced development on the Kilkich property, including the resident village, Tribal government buildings, and the Ko-Kwel Wellness Center campus. This project will create an area plan for the North and South parcels—282 acres of developable land, primarily for residential use. The plan emphasizes:

- Safe, accessible transportation for all abilities
- Diverse housing opportunities
- Infrastructure that protects natural resources and honors Tribal stewardship and sustainability

LOCATION

Kilkich Reservation,
North and South Parcels

KEY DATES

Kick-Off: January 2026
Phase 1; January - June
Phase 2; June - August
Phase 3; August- October
Phase 4; October - November

COMPLETION DATE

Est. November 2026

PROJECT COST

ODOT Grant Funded
Est. \$250K

SIGN UP FOR UPDATES

We strongly encourage you to sign up for Construction Updates through Nixle! **TEXT keyword "BUILD" to 888777.** Updates will be provided bi-weekly throughout the project.

Project Context

**Comprehensive
Plan**
Conceptual Plan
Existing
Conditions, Land
Use and
Transportation



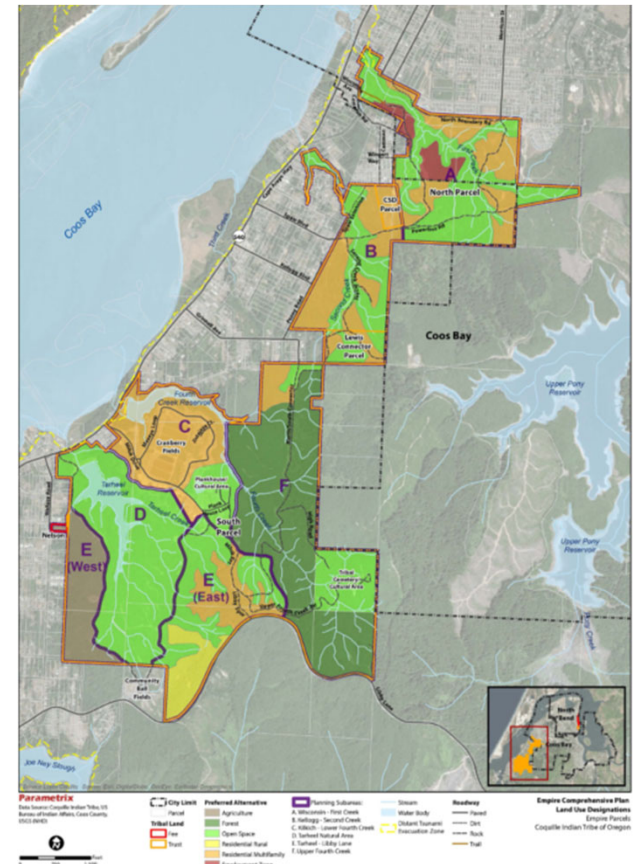
**Ko-Kwel Nation
2039**
Guiding Vision
CIT Goals and
Desired
Outcomes



Plan
*Implementation
Plan*
Housing and
Transportation
Development

Empire Comprehensive Plan

- Recommendations
 - Land use designations (implemented)
 - Utility improvements and public facility needs
 - Roadway design
 - Applied zoning
 - Costs and fundings strategy
 - Phasing Concepts



Ko-Kwel Nation 2039

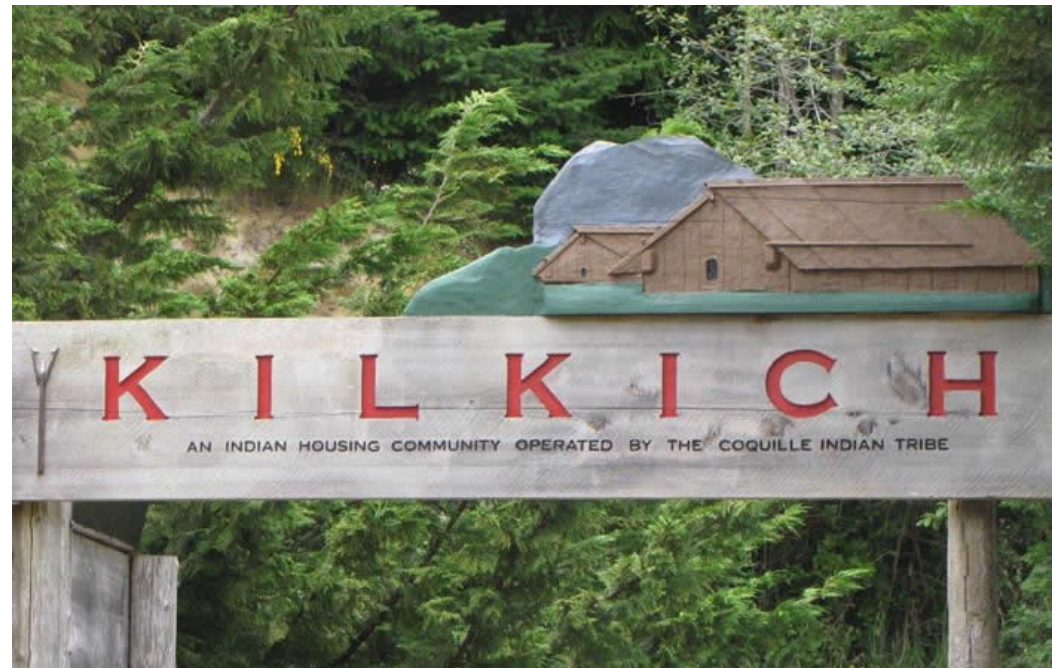
Strategic Pillar	Sovereignty	Traditional Practices	Housing
Goal	Strengthening Tribal sovereignty to expand, enhance and sustain the Ko-Kwel Nation.	Practicing responsible stewardship of all resources by protecting and promoting our traditional way of life.	Providing opportunities for housing programs that promote accessibility and security.
Outcomes (2039 Aspirations)	<ul style="list-style-type: none"> • The Tribe will work toward energy, water and food sovereignty. • Management of Tribal lands promotes and grows the Tribe’s ability to be self-sufficient. 	<ul style="list-style-type: none"> • Ko-Kwel People have access to hunting, fishing, and gathering opportunities on their ancestral lands. 	<ul style="list-style-type: none"> • Ko-Kwel families are secure in housing.

Kilkich Area Plan – Desired Outcomes

- Desired Outcomes:
 - Aligns with Ko-Kwel Nation 2039
 - Subdivision plan:
 - Supports livable community with a variety of housing types
 - Transportation system plan:
 - Includes variety of options
 - Supports efficient land management
 - Infrastructure, facility, and physical environment improvements plan:
 - Protects natural environment and culturally significant interests
 - Prioritized improvement projects for future funding and implementation
 - Updates Comprehensive Plan

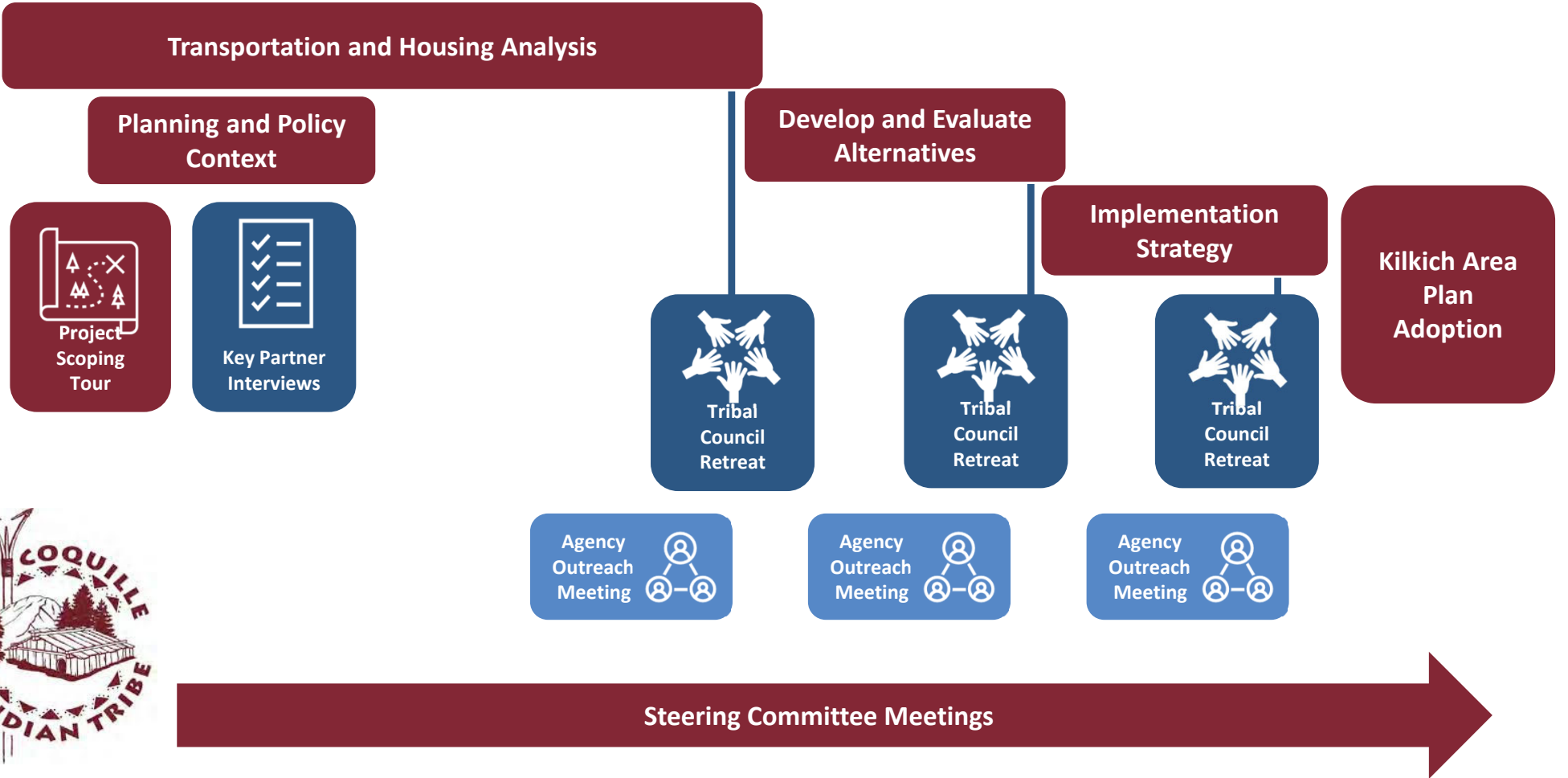
Kilkich Area Plan – Development Scenarios

- Development scenarios emphasizing:
 - Diverse housing opportunities
 - Safe, accessible transportation all abilities
 - Infrastructure that protects natural resources and honors Tribal stewardship and sustainability



KILKICH AREA PLAN VISUAL SCHEDULE

2025 January February March April May June July August September October November 2025





NEXT STEPS

- CEO 1:1 interviews to be scheduled soon
- Watch for emails or meeting invites from Kate
- Please let your organizations or staff or members know about this project/ support communications!