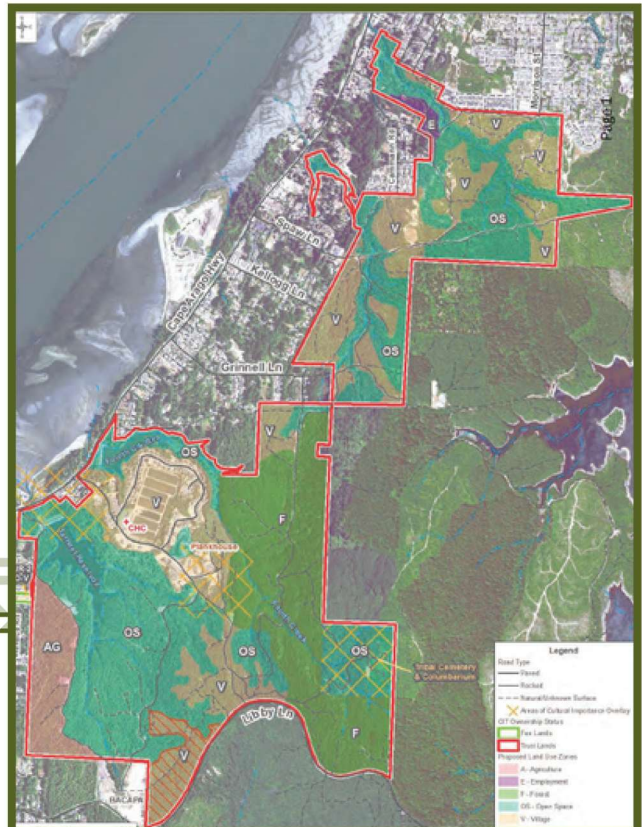


KILKICH AREA PLAN

Updated May 2026



PROJECT OVERVIEW

The Kilkich Area Plan supports the Ko-Kwel Nation 2039 Vision, shaping the long-term future of our community.

It builds on existing development at Kilkich, which includes North and South parcels, and focuses on housing, services, land use, and transportation.

This plan will guide future use of the North and South parcels: less than 200 developable acres.

PROJECT PHASE

PHASE 2

Preliminary Alternatives Phase (June- August)

Here, we start imagining possibilities. Using input from Tribal Council retreats, community visioning, and feedback from members, we'll outline several preliminary land use and transportation alternatives. These alternatives will reflect what the community values most, like housing choices, programs and services, recreation, and natural resources, while addressing gaps and improving connectivity.

PROJECT DETAILS

COST

\$250,000

ODOT grant funded

COMPLETION DATE

November 2026

LOCATION

Kilkich North & South Parcels

VISIT OUR WEBSITE

www.coquilleindiantribe.org/kilkich-area-plan